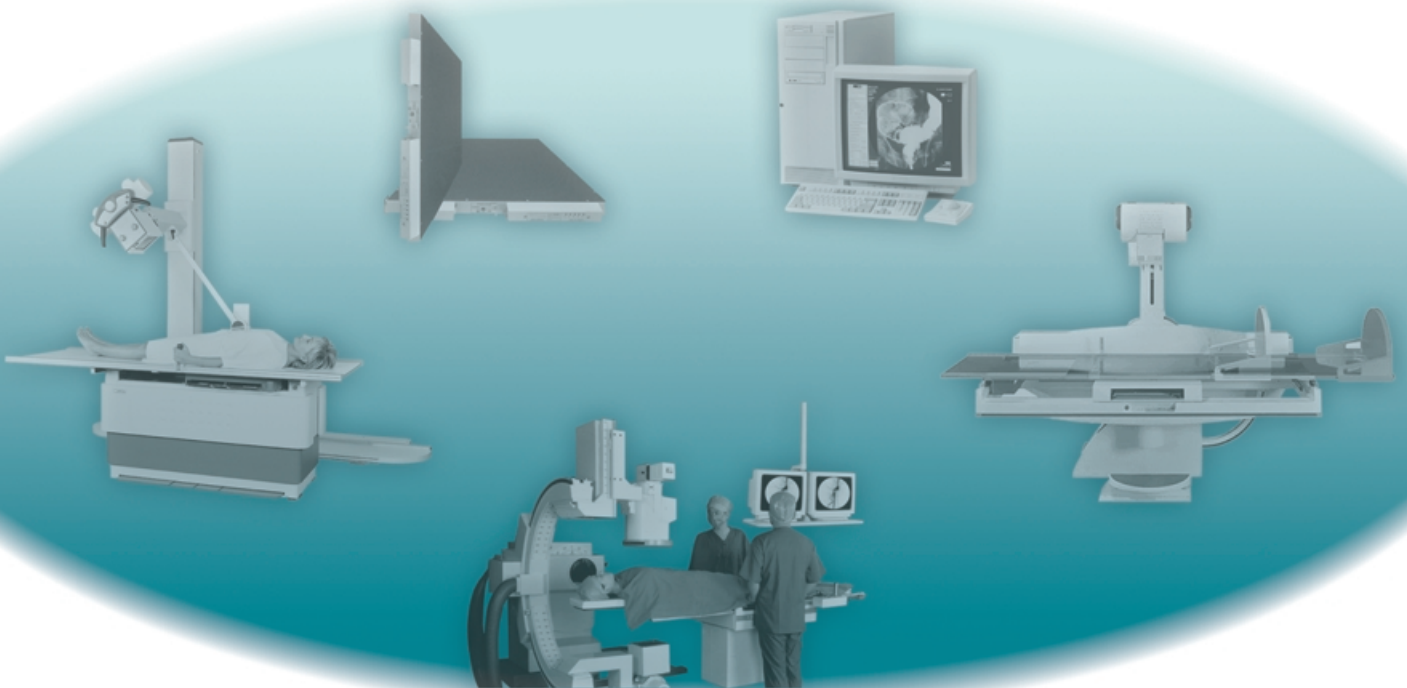




## High Frequency X-ray Generators **LINE POWERED SERIES**



### SPECIFICATIONS

#### 1 Tube / 2 Tubes (3 Tubes optional)

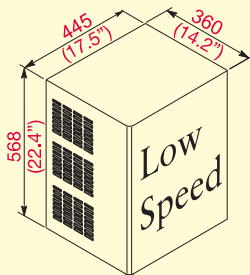
| CONSTANT POTENTIAL POWER RATINGS                         | 32 kW  | 40 kW   | 50 kW  | 64 kW  | 80 kW   |
|--|--|---|--|--|---|
| RADIOGRAPHIC kVp RANGE IN 1 kVp STEPS<br>ACCURACY        | 40 - 125/150<br>± (1%)   | 40 - 125/150<br>± (1%)  | 40 - 125/150<br>± (1%)   | 40 - 125/150<br>± (1%)   | 40 - 150<br>± (1%+)   |
| mA RANGE & STATIONS<br><br>ACCURACY                      | 10, 12.5, 16, 20, 25, 32<br>40, 50, 64, 80, 100, 125,<br>160, 200, 250, 320, 400<br><br>± (3%) | 10, 12.5, 16, 20, 25, 32<br>40, 50, 64, 80, 100, 125,<br>160, 200, 250, 320, 400<br>500<br>± (3%) | 10, 12.5, 16, 20, 25, 32,<br>40, 50, 64, 80, 100, 125,<br>160, 200, 250, 320, 400,<br>500, 640<br>± (3%) | 10, 12.5, 16, 20, 25, 32,<br>40, 50, 64, 80, 100, 125,<br>160, 200, 250, 320, 400,<br>500, 640<br>± (3%) | 10, 12.5, 16, 20, 25, 32,<br>40, 50, 64, 80, 100, 125,<br>160, 200, 250, 320, 400,<br>500, 640, 800<br>± (3%) |
| POWER OUTPUT   | 400 mA @ 80 kVp<br>320 mA @ 100 kVp<br>250 mA @ 128 kVp<br>200 mA @ 150 kVp                    | 500 mA @ 80 kVp<br>400 mA @ 100 kVp<br>320 mA @ 125 kVp<br>250 mA @ 150 kVp                       | 640 mA @ 78 kVp<br>500 mA @ 100 kVp<br>400 mA @ 125 kVp<br>320 mA @ 150 kVp                              | 640 mA @ 100 kVp<br>500 mA @ 125 kVp<br>400 mA @ 150 kVp   | 800 mA @ 100 kVp<br>640 mA @ 125 kVp<br>500 mA @ 150 kVp  |
| EXPOSURE TIME RANGE<br>ACCURACY                          | 0.001 - 10 seconds<br>±(1%+0.1 ms)   | 0.001 - 10 seconds<br>±(1%+0.1 ms)  | 0.001 - 10 seconds<br>±(1%+0.1 ms)   | 0.001 - 10 seconds<br>±(1%+0.1 ms)   | 0.001 - 10 seconds<br>±(1%+0.1 ms)  |
| MAs RANGE (*)  | 0.1 - 500 MAs (*)  | 0.1 - 500 MAs (*)   | 0.1 - 500 MAs (*)  | 0.1 - 500 MAs (*)  | 0.1 - 500 MAs (*)   |
| HIGH VOLTAGE RIPPLE (TYP)                                | <1 kVp @ 100 kVp   | <1 kVp @ 100 kVp  | <1 kVp @ 100 kVp   | <1 kVp @ 100 kVp   | <1 kVp @ 100 kVp  |
| AUTOMATIC EXPOSURE CONTROL                               | Optional   | Optional  | Optional   | Optional   | Optional  |
| TOMO   | Optional   | Optional  | Optional   | Optional   | Optional  |
| BUCKYS (2 UNITS STANDARD)                                | Optional up to 4   | Optional up to 4  | Optional up to 4   | Optional up to 4   | Optional up to 4  |
| ANATOMICAL PROGRAMMING                                   | Optional   | Optional  | Optional   | Optional   | Optional  |
| INTEGRATED HIGH SPEED STARTER                            | Optional   | Optional  | Optional   | Optional   | Optional  |
| FLUOROSCOPIC kVp RANGE IN 1 kVp STEPS<br>ACCURACY        | 40 - 120<br>±(1%)  | 40 - 120<br>±(1%)   | 40 - 120<br>±(1%)  | 40 - 120<br>±(1%)  | 40 - 120<br>±(1%)   |
| FLUOROSCOPY<br>FIXED PPS<br>VARIABLE PPS (OPTIONAL)      | AT 50Hz AT 60 Hz<br>50 PPS 60 PPS<br>1, 2, 3, 6, 1, 2, 4, 8,<br>12, 25, 30 15, 30, 60          | AT 50Hz AT 60 Hz<br>50 PPS 60 PPS<br>1, 2, 3, 6, 1, 2, 4, 8,<br>12, 25, 30 15, 30, 60             | AT 50Hz AT 60 Hz<br>50 PPS 60 PPS<br>1, 2, 3, 6, 1, 2, 4, 8,<br>12, 25, 30 15, 30, 60                    | AT 50Hz AT 60 Hz<br>50 PPS 60 PPS<br>1, 2, 3, 6, 1, 2, 4, 8,<br>12, 25, 30 15, 30, 60                    | AT 50Hz AT 60 Hz<br>50 PPS 60 PPS<br>1, 2, 3, 6, 1, 2, 4, 8,<br>12, 25, 30 15, 30, 60                         |
| AUTOMATIC BRIGHTNESS CONTROL                             | Optional   | Optional  | Optional   | Optional   | Optional  |
| 3/2 POINT OPERATION CONSOLE                              | 3 P. Standard/2 P. Optional  | 3 P. Standard/2 P. Optional   | 3 P. Standard/2 P. Optional  | 3 P. Standard/2 P. Optional  | 3 P. Standard/2 P. Optional   |
| DIGITAL IMAGE SYSTEM INTERFACE                           | Optional   | Optional  | Optional   | Optional   | Optional  |
| LINE VOLTAGE RANGE (VAC) AND PHASES                      | 220/230/240/400/415/440/480<br>Single Phase/Three phase  | 220/230/240/400/415/440/480<br>Single Phase/Three phase   | 220/230/240/400/415/440/480<br>Single Phase/Three phase  | 400/415/440/480<br>Three phase   | 400/415/440/480<br>Three phase  |
| AUTOMATIC LINE COMPENSATION                              | ± 10%  | ± 10%   | ± 10%  | ± 10%  | ± 10%   |
| MINIMUM POWER LINE REQUIREMENTS ACCORDING TO IEC 601-2-7 |  |   |  |  |   |

(\*) 640 MAs - on request

### DIMENSIONS

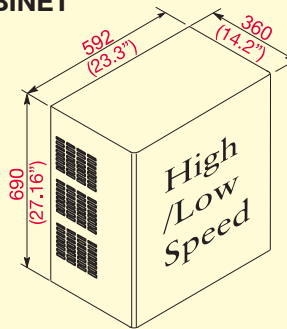
#### POWER CABINET

Rad / R&F  
1 Tube  
32 - 50 kW  
  
Net Weight = 53 Kg  
118 lb



Rad / R&F  
1/2 Tubes  
32 - 80 kW

Net Weight = 75 Kg  
166 lb



Specifications subject to change without notice

### SEDECAL

Pelaya, 9 - Poligono industrial "Rio de Janeiro"  
28110 - Algete (Madrid - SPAIN)  
Central Offices:  
Tel.: (34) 91-628 0544 / 91-628 1592  
Fax: (34) 902 190 385  
Email: marketing@sedecal.com

Factory:  
Tel.: (34) 91-629 0721  
Fax: (34) 91-629 0783  
Email: manufacturing@sedecal.com

SEDECAL facilities



### SEDECAL USA Inc

2910 N Arlington Heights Rd.  
Arlington Heights, Illinois 60004  
USA  
Tel.: 1 (847) 394 - 6960  
Fax: 1 (847) 394 - 6966  
Email: sales@sedecalusa.com